

DUAL CREDIT (DC)



WHAT IS DUAL CREDIT?

High school students enroll in college course(s) and receive credit for the course(s) from both the college and high school.



WHAT ARE THE REQUIREMENTS?

Students must meet college readiness requirements, complete all the registration steps, and pay tuition and fees to participate in dual credit.



HOW DO I SHOW COLLEGE READINESS?

- PSAT Reading score of 460+
- SAT Reading score of 480+
- TSIA Reading score of 945+ and Essay score of 5+
- ACT English and Reading Score of 40+



DOES DUAL CREDIT IMPACT MY RANK AND GPA?

Dual credit courses are not ranked. Students will see a P (pass) or F (fail) on their transcript in place of a numeric grade. For additional information on our grading policies, please reference Academy High School Bumblebee Basics.



WHAT COURSES CAN I TAKE?

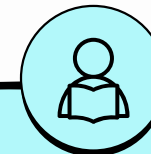
JUNIOR

- English
 - English 1301 (Fall) & English 1302 (Spring)
- History
 - History 1301 (Fall) & History 1302 (Spring)

SENIOR

- English
 - English 2322 (Fall) & English 2323 (Spring)
- History
 - Govern 2305 & Econ 2301

For additional dual credit course options, please speak with your counselor.



HOW DO I REGISTER?

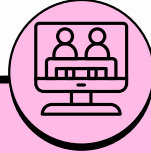
Please visit the counseling office for the Dual Credit Registration Packet.

TEXAS BIOSCIENCE INSTITUTE (TBI)



WHAT IS TBI?

The TBI program provides high school students the opportunity to earn up to 60 college credit hours. Many program participants earn an associate degree from Temple College.



WHAT ARE THE REQUIREMENTS?

Students need Algebra II and Chemistry completed by the end of sophomore year, meet college readiness requirements, complete all the registration steps, and pay tuition and fees to participate in TBI.



HOW DO I SHOW COLLEGE READINESS?

- PSAT Reading 460+ & Math 510+
- SAT Reading 480+ & Math 530+
- TSIA Reading 945+, Essay 5+ & Math 950+
- ACT Combined English and Reading 40+ & Math 22+



DOES TBI IMPACT MY RANK AND GPA?

TBI are not ranked. Students will see a P (pass) or F (fail) on their transcript in place of a numeric grade. For additional information on our grading policies, please reference Academy High School Bumblebee Basics.



WHAT ASSOCIATE DEGREE PROGRAMS ARE AVAILABLE?

- Associate of Science in Allied Health
- Associate of Science in Biology
- Associate of Arts in Computer Information Systems
- Associate of Science in Engineering Technology
- Associate of Science in Pre Nursing



HOW DO I REGISTER?

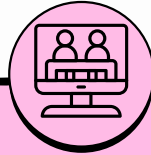
Please visit the counseling office for the Texas Bioscience Institute Registration Packet.

ADVANCED PLACEMENT (AP)



WHAT IS ADVANCED PLACEMENT?

AP offers undergraduate university-level curricula and examinations to high school students. Colleges and universities may grant placement and course credit to students who obtain qualifying scores on the examinations.



WHAT ARE THE REQUIREMENTS?

Currently, there are no requirements to take AP courses. It is recommended that students participated in advanced courses in middle and high school.



WHAT SCORE DO I NEED ON MY AP EXAM TO EARN COLLEGE CREDIT?

Many schools will give college credit for a 3 or higher on an AP exam, but policies may differ. Please visit the college's website for information on their AP policy.



DOES AP IMPACT MY RANK AND GPA?

AP courses receive weighted rank and GPA points. For additional information on our grading policies, please reference Academy High School Bumblebee Basics.



WHAT AP COURSES CAN I TAKE?

- AP English III
- AP English IV
- AP Physics
- AP Calculus
- AP US History



HOW DO I REGISTER?

Please speak with your counselor about adding AP courses to your four year plan.